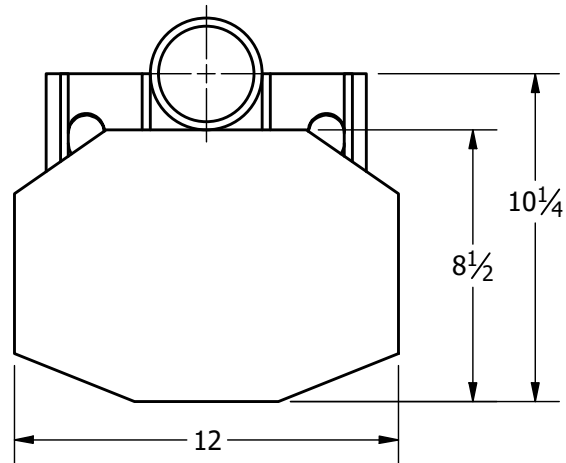
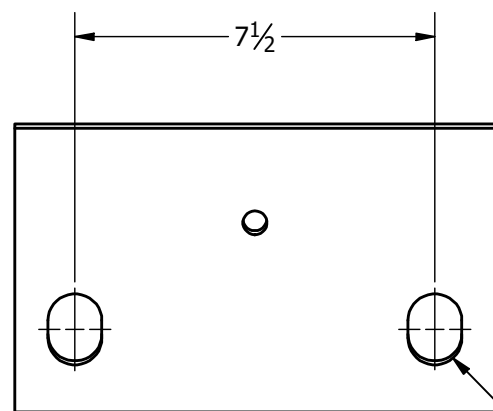


COUNTERFORCE 2 UNDERPINNING BRACKET FOR 2 7/8" PILE SHAFT

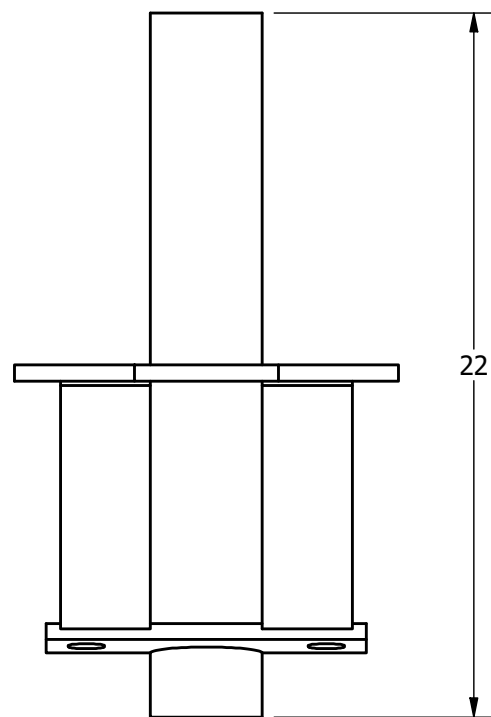


2 7/8" COUNTERFORCE 2 BRKT BASE TOP

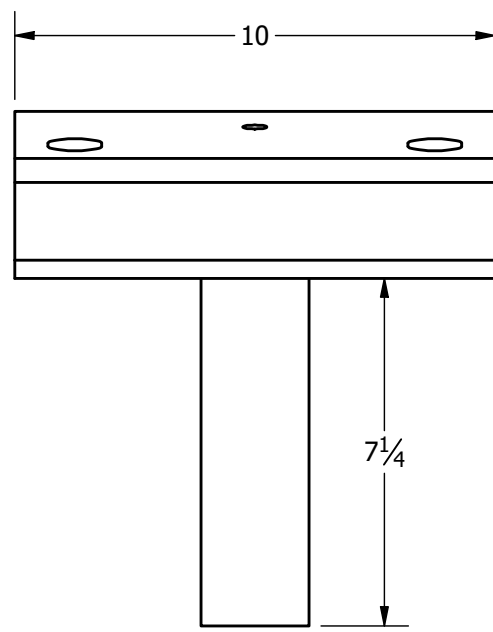


2 7/8" COUNTERFORCE 2 T-BRKT TOP

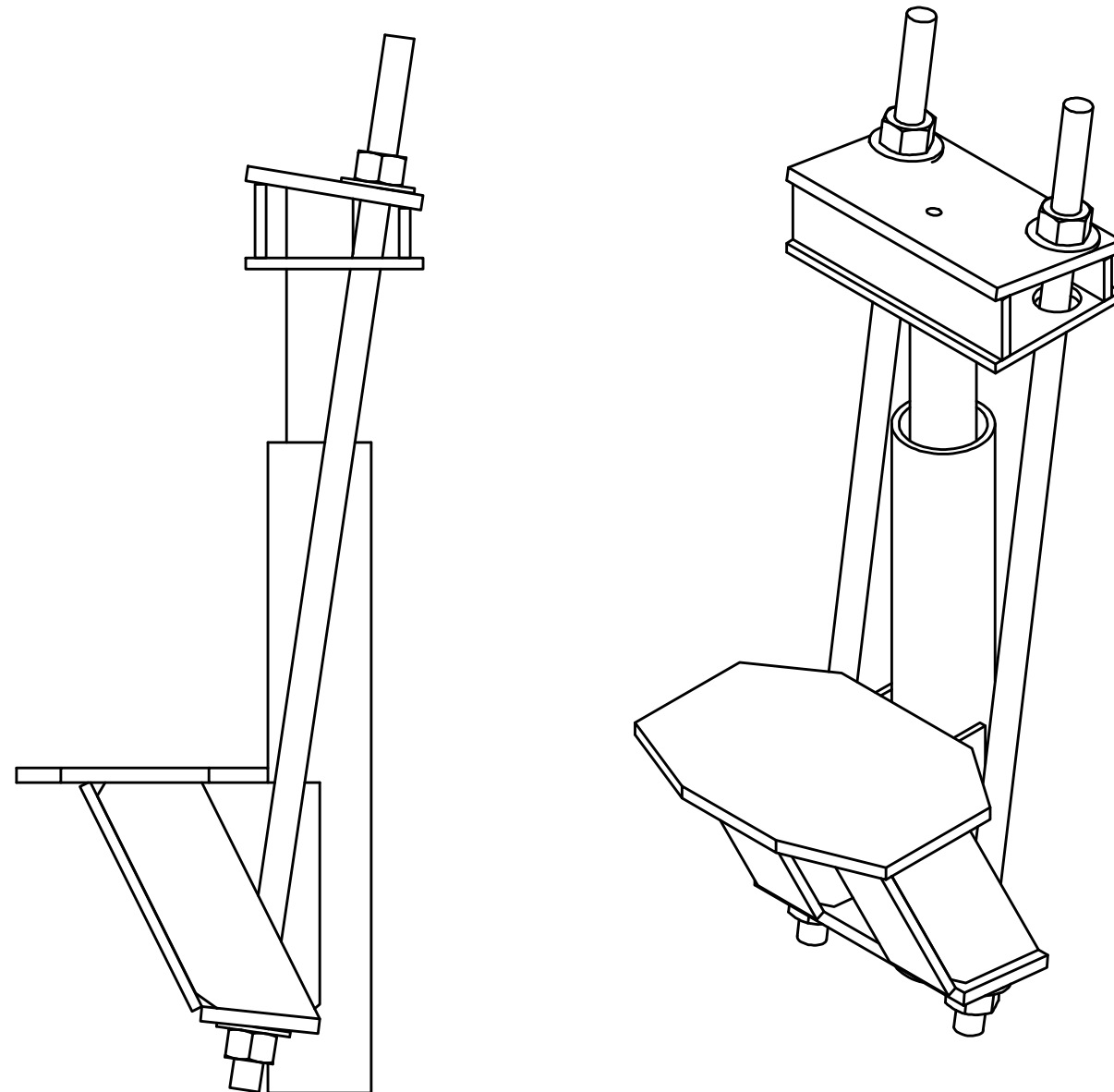
1 1/2 X 1 1/8
SLOT (TYP)



2 7/8" COUNTERFORCE 2 BRKT BASE FRONT



2 7/8" COUNTERFORCE 2 T-BRKT BACK



NOTES:

1. PLATE STEEL TO MEET OR EXCEED REQUIREMENTS OF ASTM A572/A1018/A656, 50 KSI.
2. ALL WELDING TO BE PERFORMED BY SHOP QUALIFIED WELDOR TO AWS D1.1 STRUCTURAL WELDING CODE - STEEL.
3. GALVANIZING PER ASTM A153/ASTM A123. BARE STEEL IS ALSO AVAILABLE.
4. ULTIMATE STRUCTURAL CAPACITY IS 90 KIPS.
5. (2) 1"-8 X 3' GALVANIZED THREADED ROD - ASTM A193 (GRADE B7).
6. (4) 1" GALVANIZED HEX NUT - ASTM A194.
7. (4) 1" GALVANIZED FLAT WASHERS - ASTM F436.
8. HELICAL PILE ASSEMBLIES MANUFACTURED IN ACCORDANCE WITH ICC-ES AC358 ACCEPTANCE CRITERIA FOR HELICAL FOUNDATION SYSTEMS AND DEVICES.
9. PATENT PENDING.

DRAWN AP	4/22/2020
CHECKED LRS	4/23/2020
IDEAL MANUFACTURING, INC. 999 PICTURE PARKWAY WEBSTER, NY 14580 800-789-4810 WWW.IDL-GRP.COM	



PROPRIETARY AND CONFIDENTIAL
THE INFORMATION CONTAINED IN THIS
DRAWING IS THE SOLE PROPERTY OF
IDEAL MANUFACTURING, INC. ANY
REPRODUCTION IN PART OR AS A
WHOLE WITHOUT WRITTEN
PERMISSION OF IDEAL
MANUFACTURING, INC. IS PROHIBITED.

NOT TO SCALE ALL UNITS IN INCHES U.N.O.	SIZE B	DWG NO 278CF2G	REV 0	SHEET 1 OF 1
--	-----------	-------------------	----------	--------------