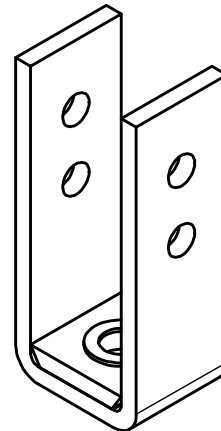
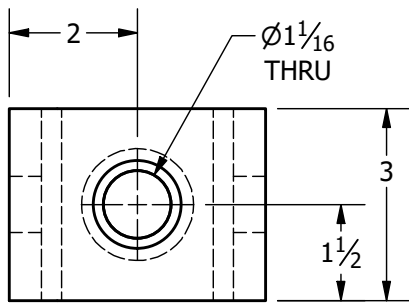
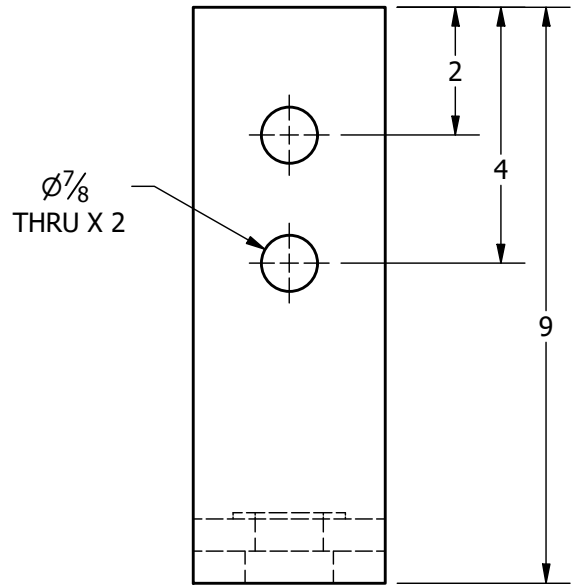
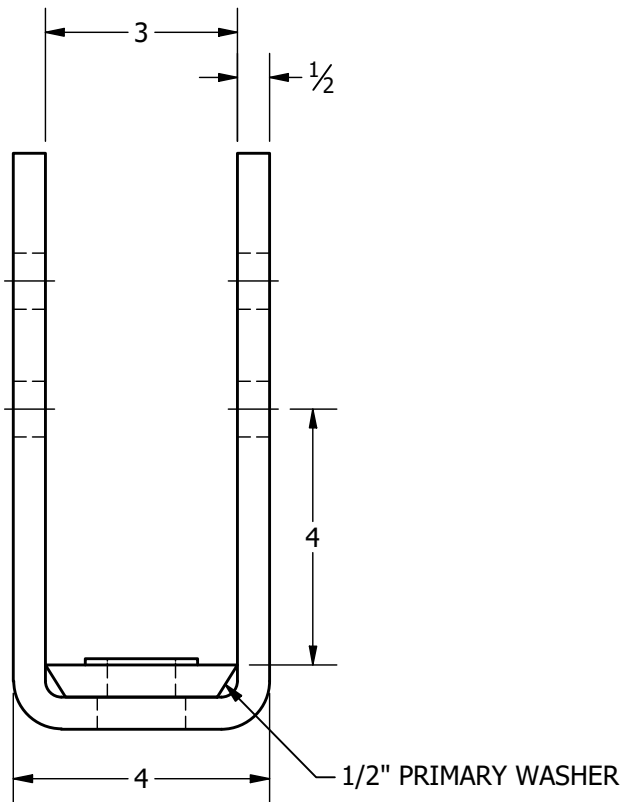


2 7/8" TIE-BACK ADAPTER U-SHAPED FOR 7/8" OR 1" ROD



NOTES:

1. U-SHAPED TO MEET OR EXCEED 46 KSI.
2. ULTIMATE CAPACITY OF U-SHAPED UNIT IS 90 KIPS. TO OBTAIN FULL CAPACITY, BOLT MUST BE TIGHTENED UNTIL WALLS OF ADAPTER ARE TIGHT TO THE HELICAL SHAFT. THREADED ROD MAY LIMIT CAPACITY OF THE ASSEMBLY.
3. GALVANIZING PER ASTM A153/ASTM A123. BARE STEEL IS ALSO AVAILABLE.
4. (2) 3/4" DIAMETER 5" LONG GALVANIZED HEAVY HEX BOLT ASTM A325 AND (2) 3/4" GALVANIZED HEX NUT (GRADE A) TO BE INCLUDED.
5. PRIMARY WASHER W/ 1 1/16" CENTER HOLE FOR 7/8" OR 1" ROD.
6. A SECONDARY WASHER IS INCLUDED AND MUST BE UTILIZED FOR 7/8" ROD.
7. THREADED ROD AND NUTS/WASHERS ARE NOT INCLUDED. THEY CAN BE PURCHASED SEPARATELY FROM IDEAL.

DRAWN AP 4/27/2020

CHECKED DSS 4/27/2020

IDEAL MANUFACTURING, INC.  
999 PICTURE PARKWAY  
WEBSTER, NY 14580  
800-789-4810 | WWW.IDL-GRP.COM



PROPRIETARY AND CONFIDENTIAL  
THE INFORMATION CONTAINED IN THIS  
DRAWING IS THE SOLE PROPERTY OF  
IDEAL MANUFACTURING, INC. ANY  
REPRODUCTION IN PART OR AS A  
WHOLE WITHOUT WRITTEN  
PERMISSION OF IDEAL  
MANUFACTURING, INC. IS PROHIBITED.

NOT TO SCALE  
ALL UNITS IN INCHES U.N.O.

SIZE DWG NO  
A 278TBAUG

REV  
0

SHEET 1 OF 1