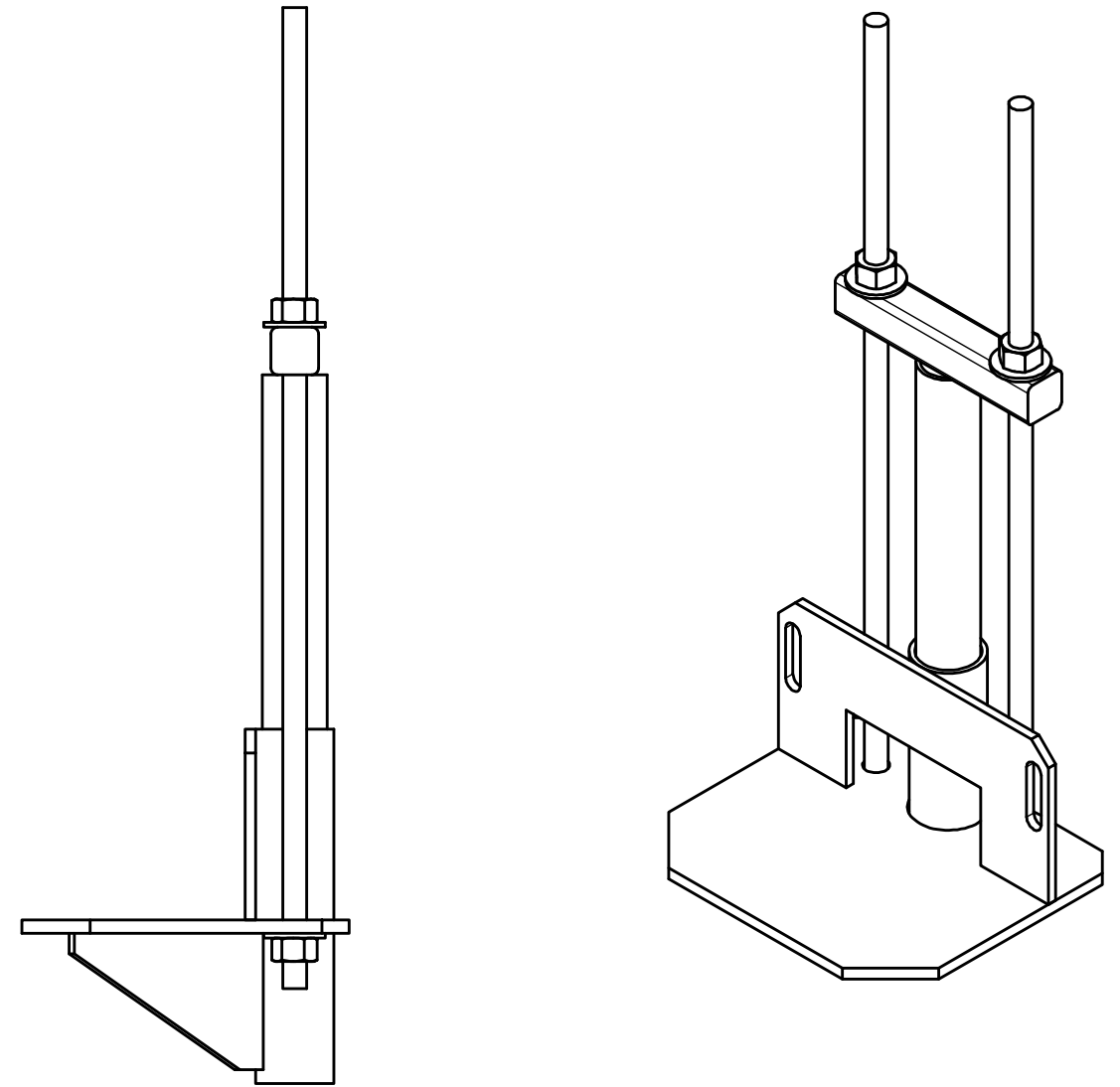
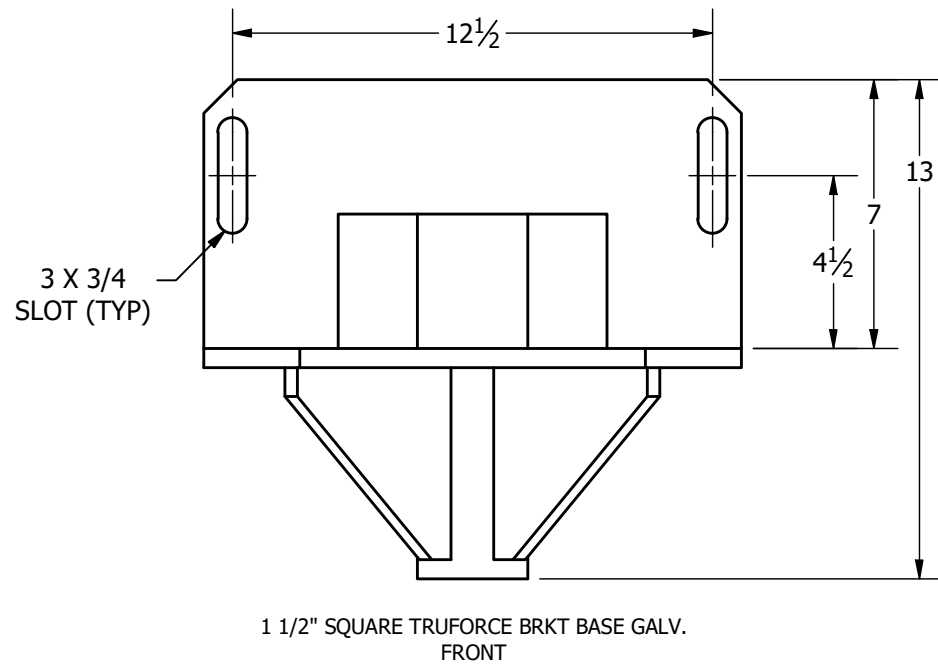
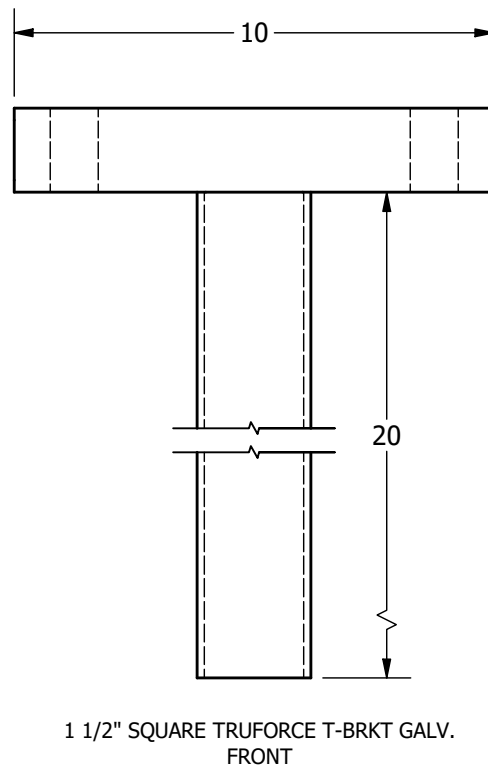
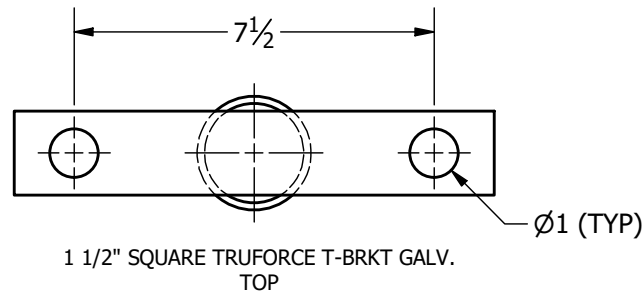
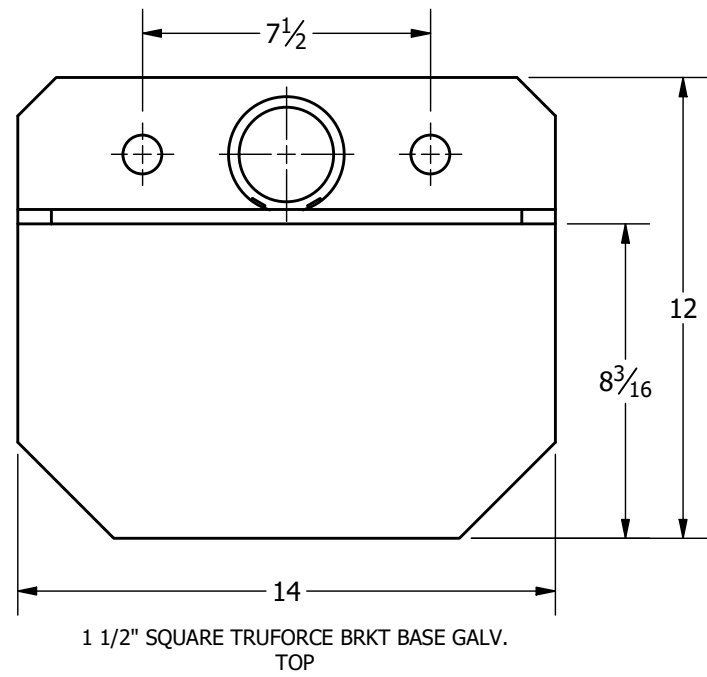


# TRUFORCE UNDERPINNING BRACKET FOR 1 1/2" ROUND CORNER SQUARE SHAFT



**NOTES:**

1. PLATE STEEL TO MEET OR EXCEED REQUIREMENTS OF ASTM A572/A1018/A656, 50 KSI.
2. ALL WELDING TO BE PERFORMED BY SHOP QUALIFIED WELDOR TO AWS D1.1 STRUCTURAL WELDING CODE - STEEL.
3. GALVANIZING PER ASTM A153/ASTM A123. BARE STEEL IS ALSO AVAILABLE.
4. ULTIMATE STRUCTURAL CAPACITY IS 40 KIPS.
5. (2) 7/8"-9 X 3' GALVANIZED THREADED ROD - ASTM A307.
6. (4) 7/8" GALVANIZED HEX NUT - ASTM A653.
7. (4) 7/8" GALVANIZED FLAT WASHERS - ASTM F436.
8. HELICAL PILE ASSEMBLIES MANUFACTURED IN ACCORDANCE WITH ICC-ES AC358 ACCEPTANCE CRITERIA FOR HELICAL FOUNDATION SYSTEMS AND DEVICES.

DRAWN AP	4/22/2020
CHECKED LRS	4/23/2020
IDEAL MANUFACTURING, INC. 999 PICTURE PARKWAY WEBSTER, NY 14580 800-789-4810   WWW.IDL-GRP.COM	



PROPRIETARY AND CONFIDENTIAL  
THE INFORMATION CONTAINED IN THIS  
DRAWING IS THE SOLE PROPERTY OF  
IDEAL MANUFACTURING, INC. ANY  
REPRODUCTION IN PART OR AS A  
WHOLE WITHOUT WRITTEN  
PERMISSION OF IDEAL  
MANUFACTURING, INC. IS PROHIBITED.

NOT TO SCALE ALL UNITS IN INCHES U.N.O.	SIZE B	DWG NO SQ150TFBPG	REV 0	SHEET 1 OF 1
--	-----------	----------------------	----------	--------------