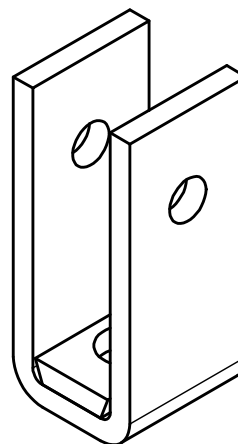
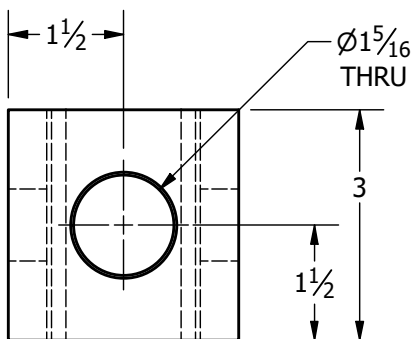
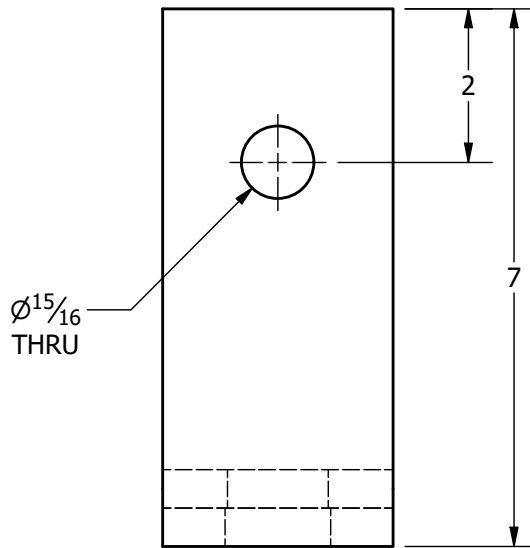
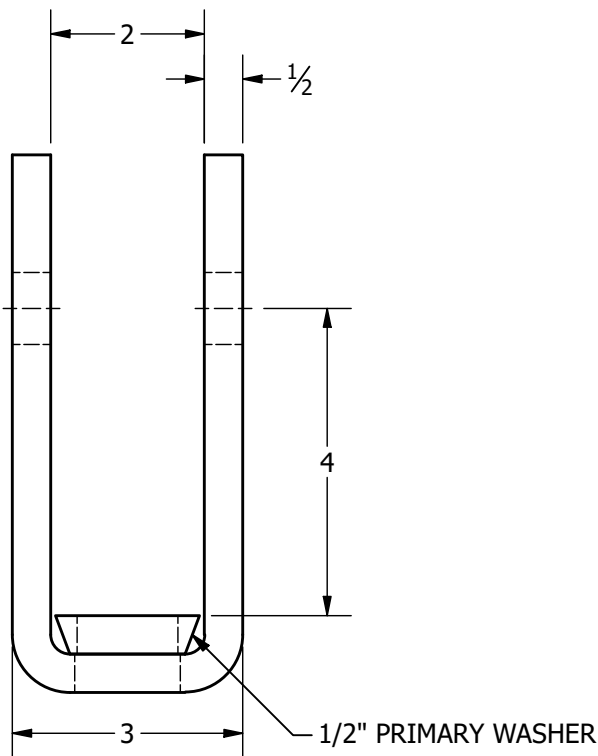


1 3/4" TIE-BACK ADAPTER U-SHAPED FOR 1 1/4" ROD



NOTES:

1. U-SHAPE TO MEET OR EXCEED 46 KSI.
2. ULTIMATE CAPACITY OF U-SHAPED UNIT IS 60 KIPS. TO OBTAIN FULL CAPACITY, BOLT MUST BE TIGHTENED UNTIL WALLS OF ADAPTER ARE TIGHT TO THE HELICAL SHAFT. THREADED ROD MAY LIMIT CAPACITY OF THE ASSEMBLY.
3. GALVANIZING PER ASTM A153/ASTM A123. BARE STEEL IS ALSO AVAILABLE.
4. (1) 7/8" DIAMETER 4 1/4" LONG GALVANIZED HEAVY HEX BOLT ASTM A325 AND (1) 7/8" GALVANIZED HEX NUT (GRADE A) TO BE INCLUDED.
5. A SECONDARY WASHER IS INCLUDED AND MUST BE UTILIZED.
6. THREADED ROD AND NUTS/WASHERS ARE NOT INCLUDED. THEY CAN BE PURCHASED SEPARATELY FROM IDEAL.

DRAWN AP 4/27/2020

CHECKED DSS 6/2/2020

IDEAL MANUFACTURING, INC.
999 PICTURE PARKWAY
WEBSTER, NY 14580
800-789-4810 | WWW.IDL-GRP.COM



PROPRIETARY AND CONFIDENTIAL
THE INFORMATION CONTAINED IN THIS
DRAWING IS THE SOLE PROPERTY OF
IDEAL MANUFACTURING, INC. ANY
REPRODUCTION IN PART OR AS A
WHOLE WITHOUT WRITTEN
PERMISSION OF IDEAL
MANUFACTURING, INC. IS PROHIBITED.

NOT TO SCALE
ALL UNITS IN INCHES U.N.O.

SIZE A DWG NO SQ175TBAU114G

REV 0

SHEET 1 OF 1